



Redmayne Arnold & Harris
estate agents, letting agents & surveyors

rah.co.uk



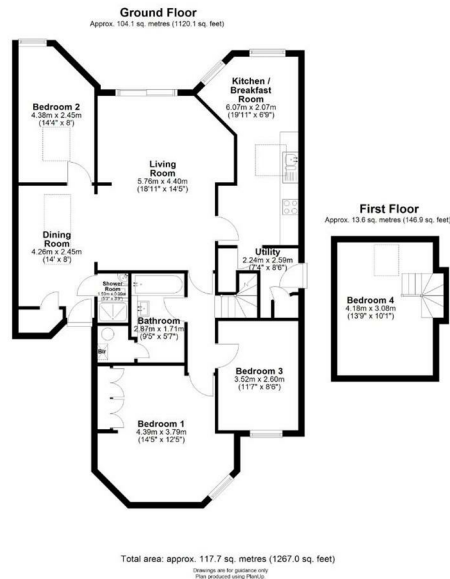
TO LET



24 Wilberforce Road, Cambridge, CB3 0EQ

£2,750 PCM

- Beautiful setting
- Large entrance hallway
- Three double bedrooms
- Kitchen/breakfast room
- Driveway parking
- Excellent access to city centre & A14
- Two bathrooms
- Open-plan living/dining room
- Large garden to rear
- Managed by RAH



Directions

THE PROPERTY

A truly individual property within a beautiful setting, offering good access to many schools, city centre & A14. This detached bungalow with an upstairs room, comprises large entrance hall with built in storage, open-plan living/dining room with sliding doors onto garden, kitchen/breakfast room, utility room, three bedrooms, shower room, a further family bathroom and a study to the first floor. There is a large garden to the rear with separate studio, and a front garden offering driveway parking, secure bike racks and side access. The property will be managed by RAH.

EPC Rating: C

Council Tax Band: F

Minimum 12 Month Tenancy

Deposit £3170

Holding Deposit: £390

SITUATION

